

Weaving Through Time: Native Plant Selection and Archaeological Textiles from Eastern Oregon

Elizabeth Kallenbach, University of Oregon
Museum of Natural and Cultural History





The Paisley Caves, Oregon



Research Questions

What plant taxa are represented in Paisley Caves archaeological textiles?

Is there change in plant selection for textiles over time?

What can this tell us about how people engaged with diverse and changing landscapes?



Tule sandal, ca. 1570- 1400 cal BP

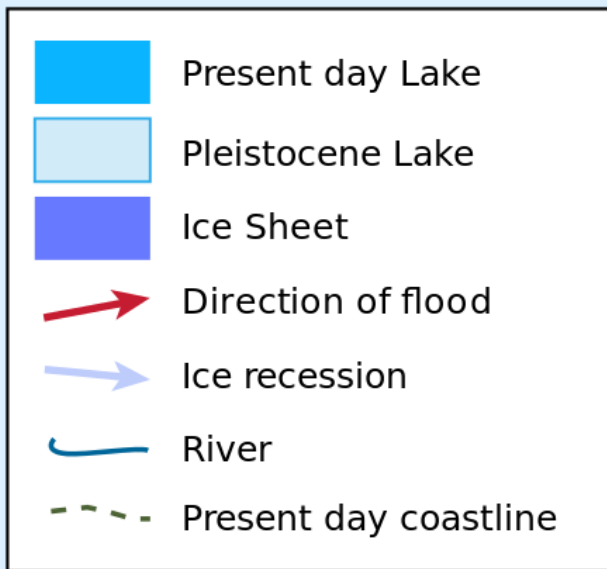
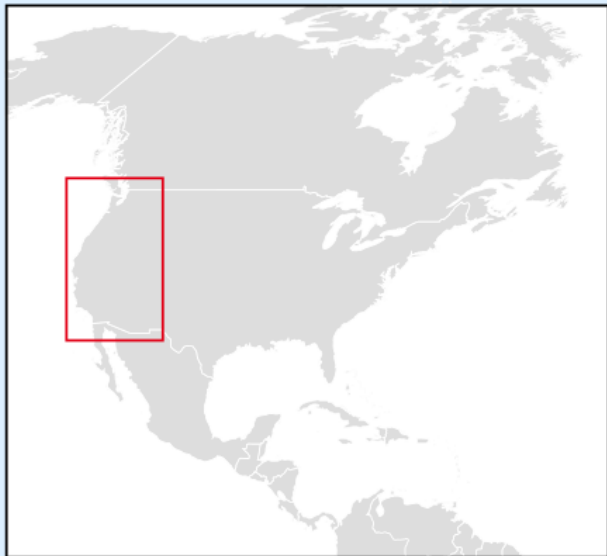






Summer Lake Basin

Paisley Caves

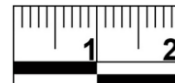




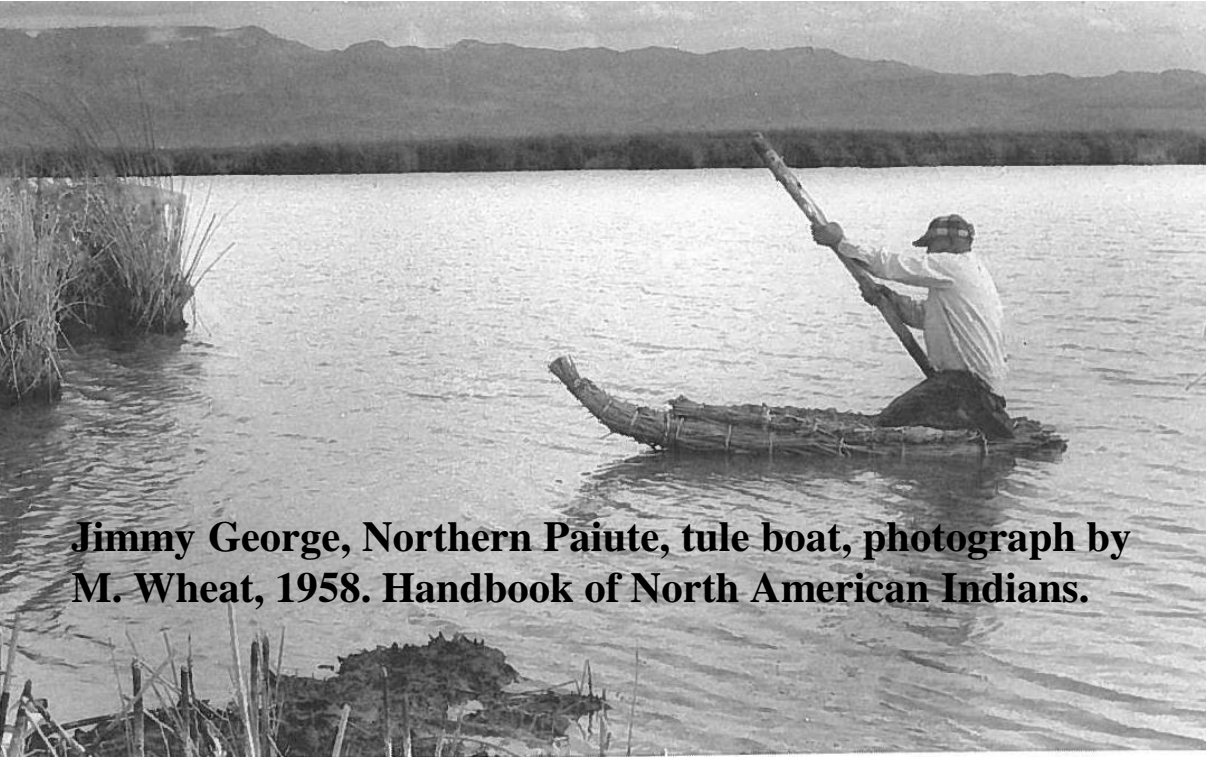
Whole tule stem basketry



Twisted cattail leaf



Split tule Catlow twined basketry with decorative feather quill, ca. 7560 cal BP



Jimmy George, Northern Paiute, tule boat, photograph by M. Wheat, 1958. Handbook of North American Indians.



Schoenoplectus sp. (Tule)



Typha latifolia and *T. angustifolia* (Cattail)

Paisley Caves Textiles



Tule sandal ca. 2360-2145 cal BP



Tule basketry



Tule (*Schoenoplectus* sp.) basketry weft fragment, ca. 12,273 ± 56 cal BP



Dogbane (*Apocynum* sp.) cordage and netting



Sagebrush bark (*Artemisia* sp.) open-twining



Sagebrush bark (*Artemisia* sp.) 3-strand braid, ca. 12,378-11,835 cal BP

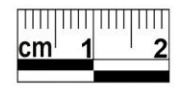
Photography courtesy of Tom Connolly, Museum of Natural and Cultural History



Tule cordage

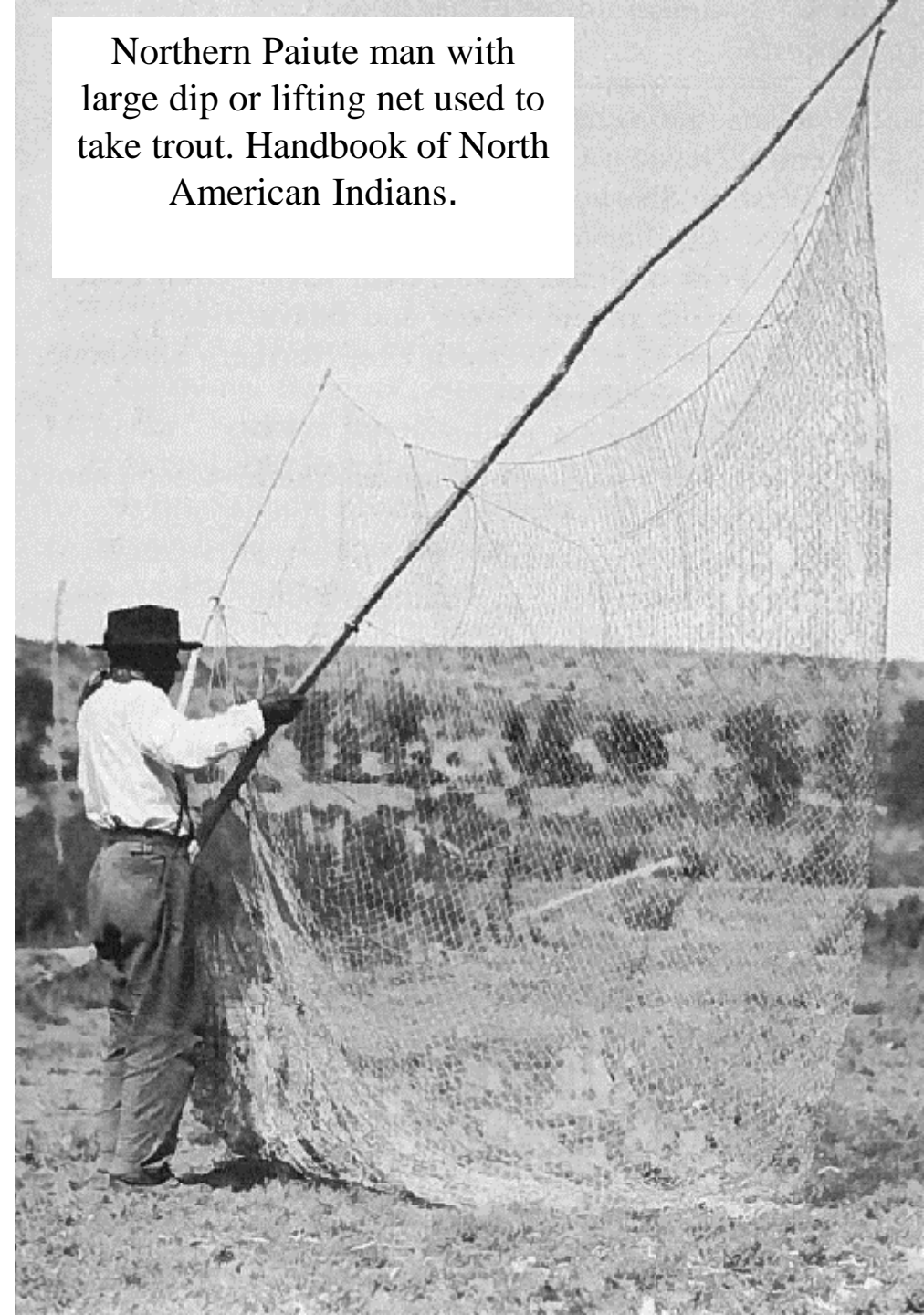


Sagebrush bark (*Artemisia* sp.) rope

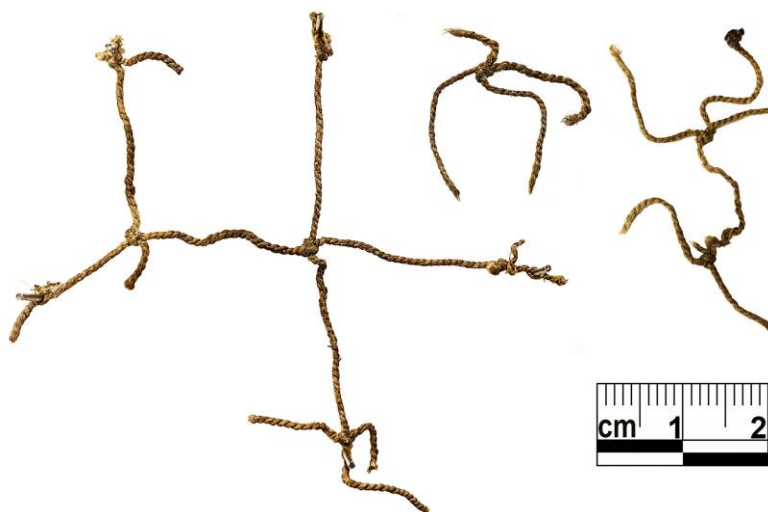


Photography courtesy of Tom Connolly, Museum of Natural and Cultural History

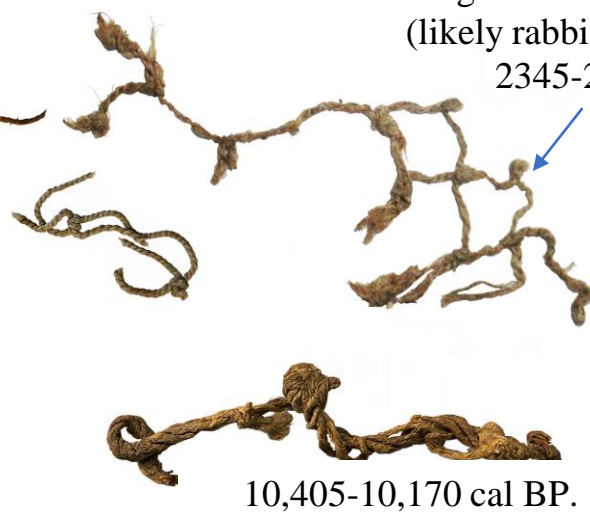
Northern Paiute man with large dip or lifting net used to take trout. Handbook of North American Indians.



Dogbane (*Apocynum* sp.) net fragments



Dogbane net with lagomorph (likely rabbit) protein residue, 2345-2180 cal BP

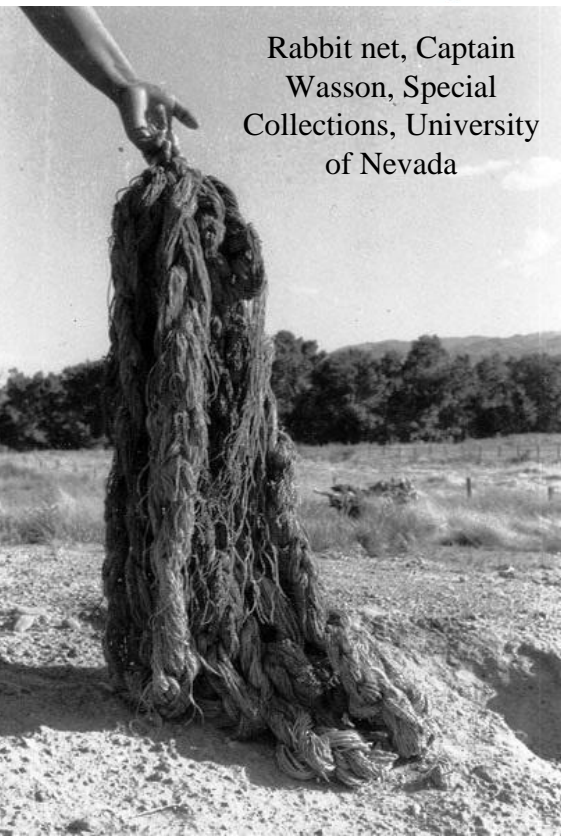


Stinging nettle net and cord fragments



10,405-10,170 cal BP.

Rabbit net, Captain Wasson, Special Collections, University of Nevada



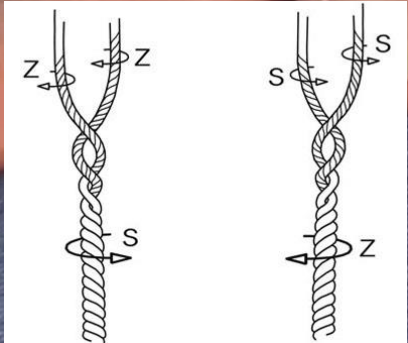
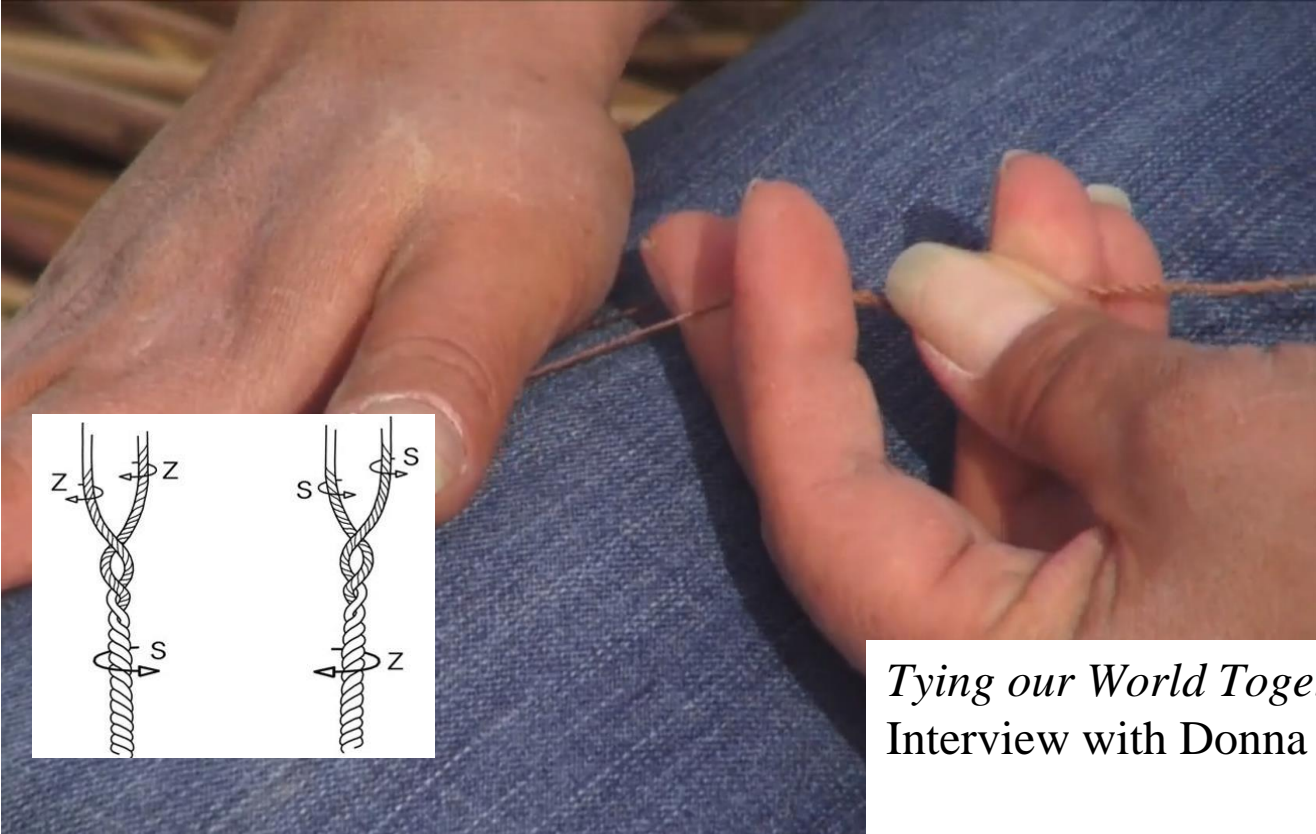
Dogbane and stinging nettle long nets, 400 cal BP



Apocynum cannabinum (Dogbane)



Urtica dioica (stinging nettle)

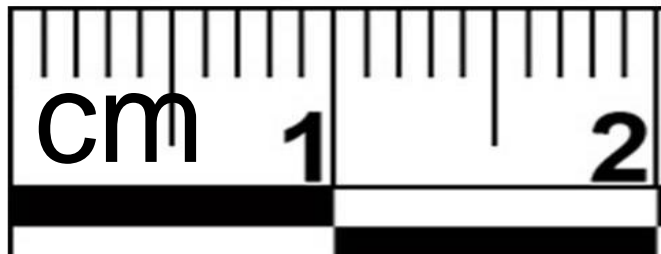


Tying our World Together: Gathering Dogbane. Nevada Arts Council, 2012.
Interview with Donna Cossette and Carol Sanders, Fallon, Nevada.

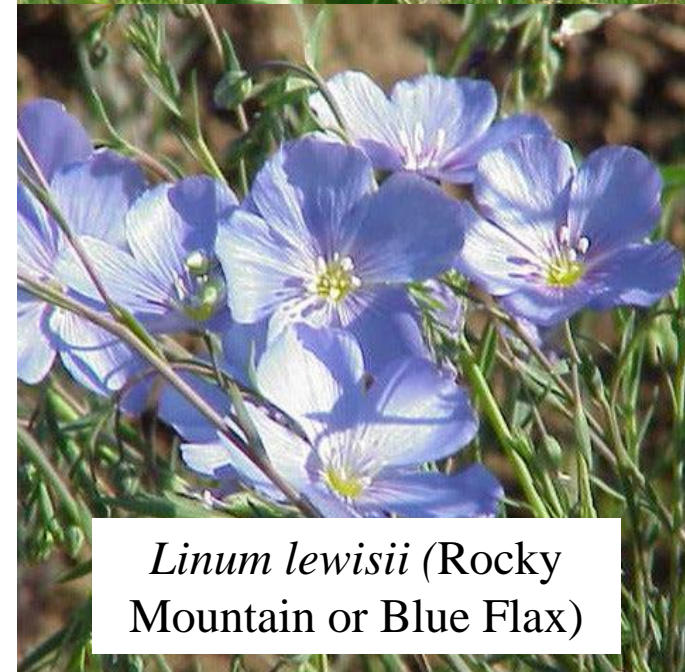
Milkweed (*Asclepias* sp.)



Blue flax (*Linum lewisii*)



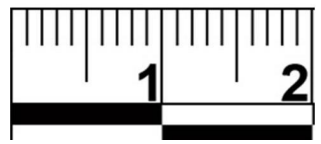
Asclepias speciosa
(Showy milkweed)



Linum lewisii (Rocky
Mountain or Blue Flax)



Juniper bark 12,440-11,815 cal BP



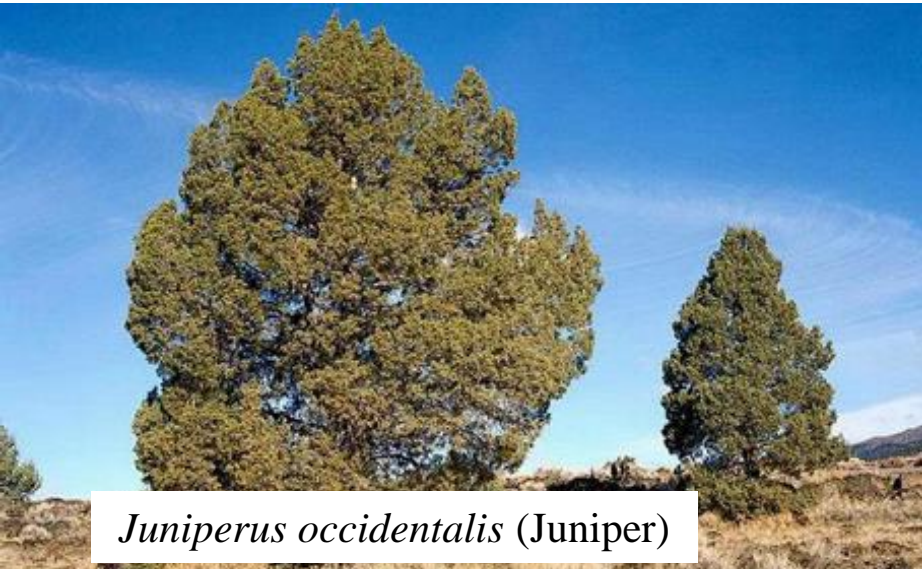
Juniper bark cordage



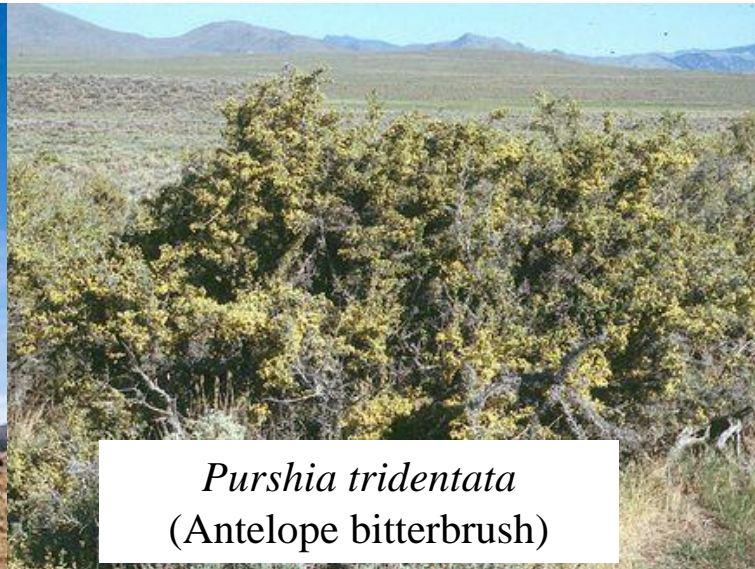
Twisted bitterbrush or cliffrose



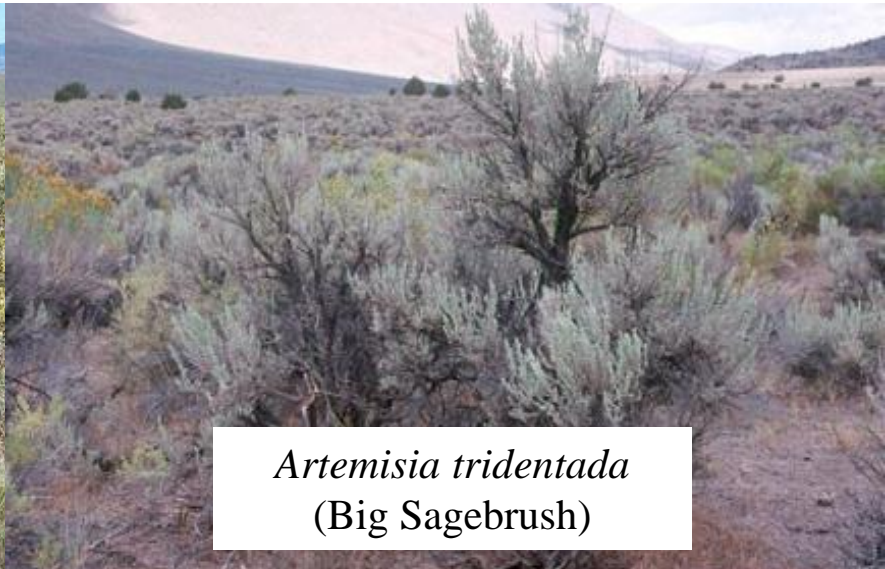
Sagebrush bark three-strand braids, ca. 12,000 years old



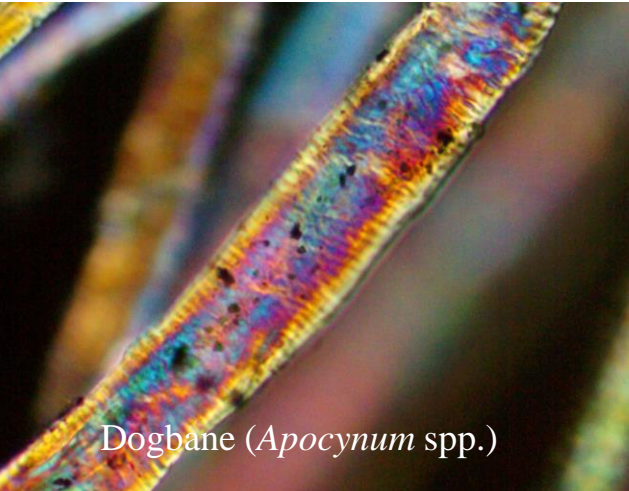
Juniperus occidentalis (Juniper)



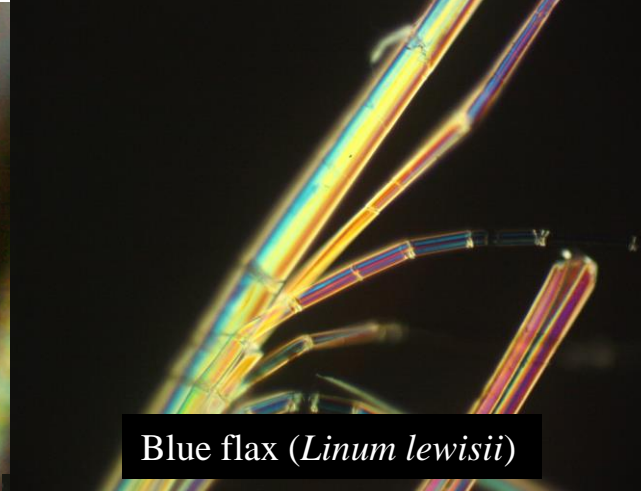
Purshia tridentata
(Antelope bitterbrush)



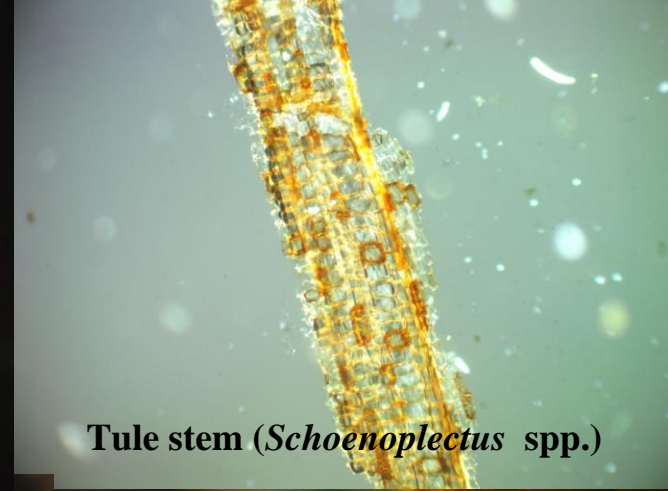
Artemisia tridentata
(Big Sagebrush)



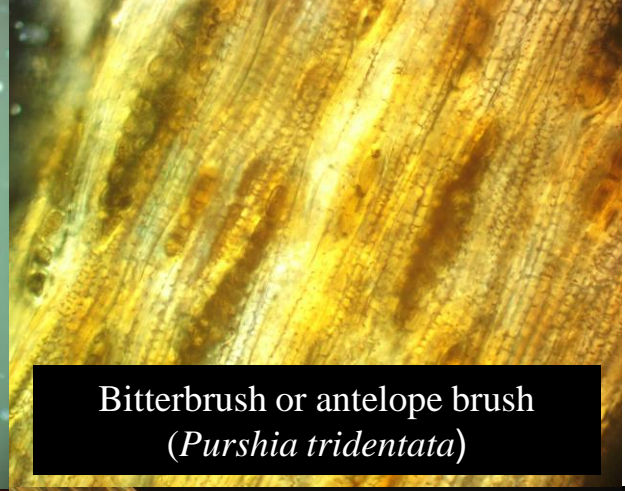
Dogbane (*Apocynum* spp.)



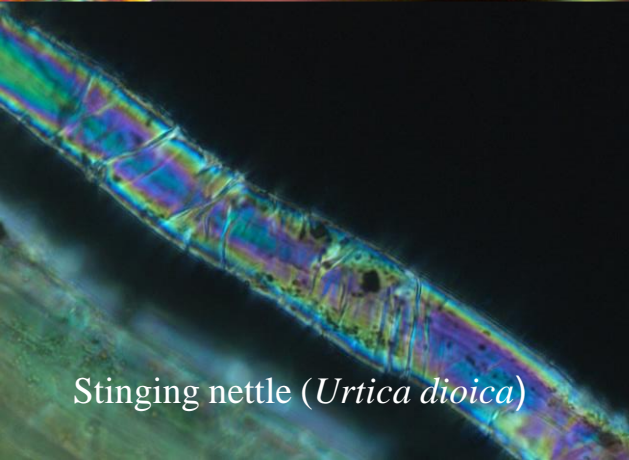
Blue flax (*Linum lewisii*)



Tule stem (*Schoenoplectus* spp.)



Bitterbrush or antelope brush
(*Purshia tridentata*)



Stinging nettle (*Urtica dioica*)



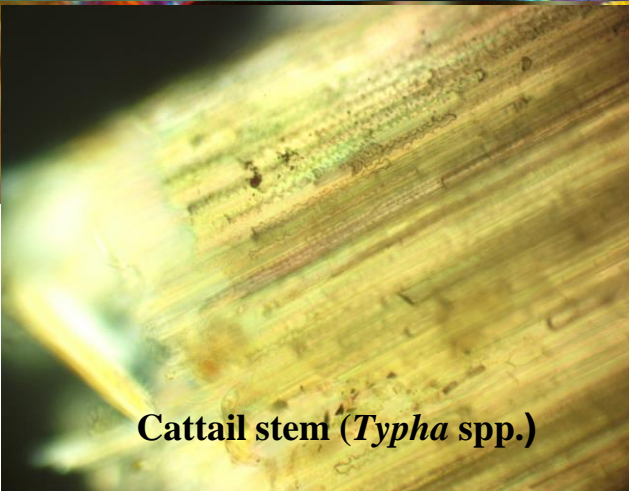
Milkweed (*Asclepias* spp.)



Willow bark (*Salix* spp.)



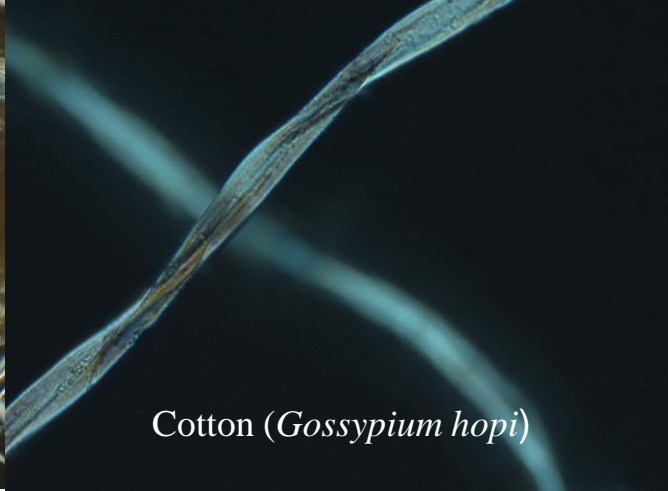
Sagebrush bark (*Artemisia* spp.)



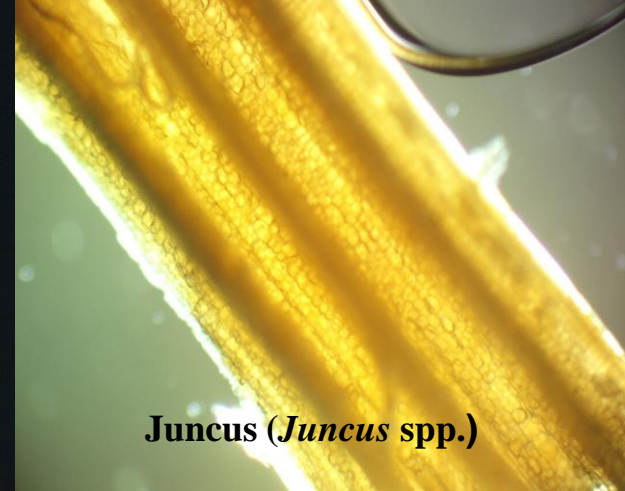
Cattail stem (*Typha* spp.)



Cattail seed hair (*Typha* spp.)



Cotton (*Gossypium hosi*)



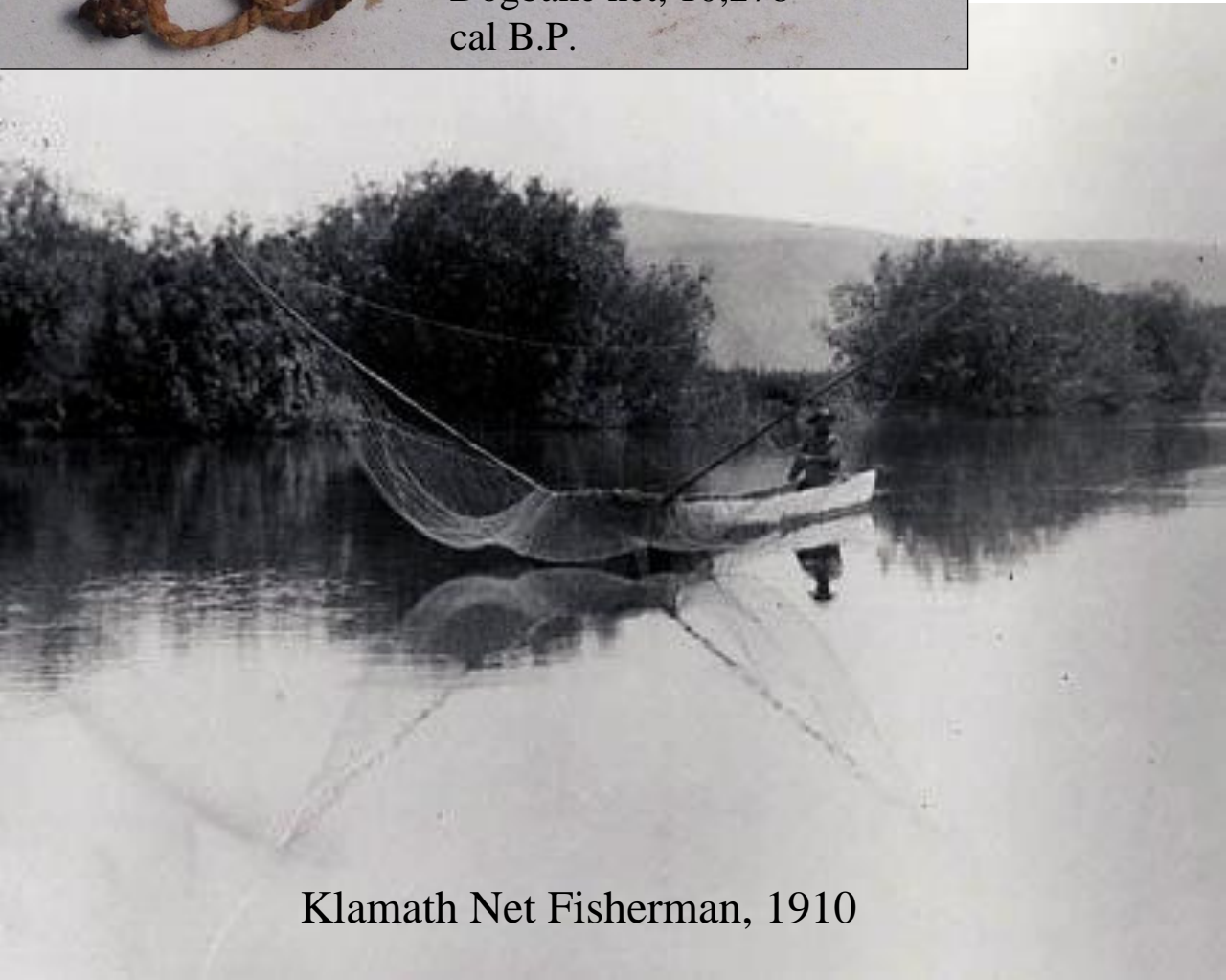
Juncus (*Juncus* spp.)



Dogbane net, 10,278 cal B.P.

Late Pleistocene/Early Holocene Transition
14,700-11,500 years ago

Tule basketry

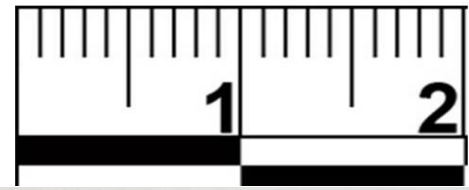


Klamath Net Fisherman, 1910



Klamath Marsh National Wildlife Refuge

Late Holocene, last 3000 years



Flax cordage

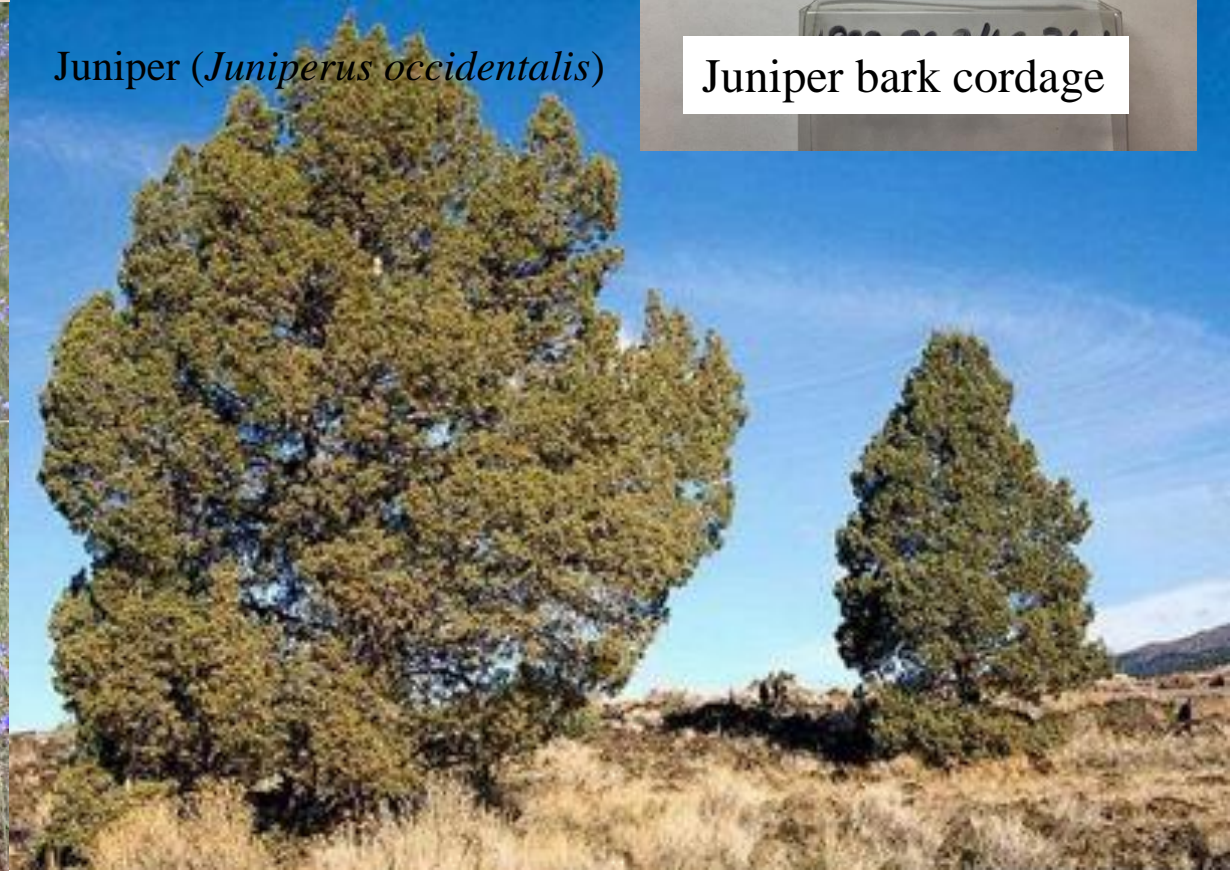


Juniper bark cordage

Blue flax (*Linum lewisii*)



Juniper (*Juniperus occidentalis*)





Klamath woman's hat (view of top), 19th Century, dogbane cordage warp start, tule weft



Klamath woman's hat, 19th Century, stinging nettle cordage warp, tule weft, porcupine quill dyed yellow with wolf lichen.



Klamath gaming tray, 19th Century, tule and cattail basal leaf weft, dogbane cord start, porcupine quills.



Returning from gathering cattail and tule in dug out canoes, Millard Lang in front, Ike Mose in rear of front canoe, 1900, Oregon Historical Society

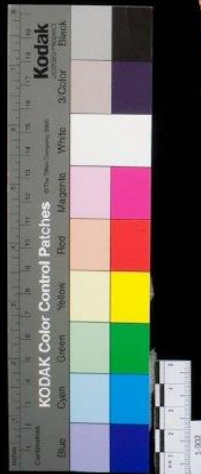
Klamath hat, 19th Century, cattail weft, tule root.





Fiber artist: Pat Courtney Gold, Wasco, Warm Springs Reservation, contemporary piece.
Cattail, tule.

*Baskets from the University of Oregon
Museum of Natural and Cultural History*



Wasco, Columbia Plateau. Dogbane, cotton, cattail, corn husk, buckskin. 19th century.



Clatsop, Oregon Coast, Sweetgrass sedge, bear grass, sea grass



Nez Perce, Umatilla, Columbia Plateau. Dogbane, jute twine, corn husk, wool, cotton, leather. 19th century.

